

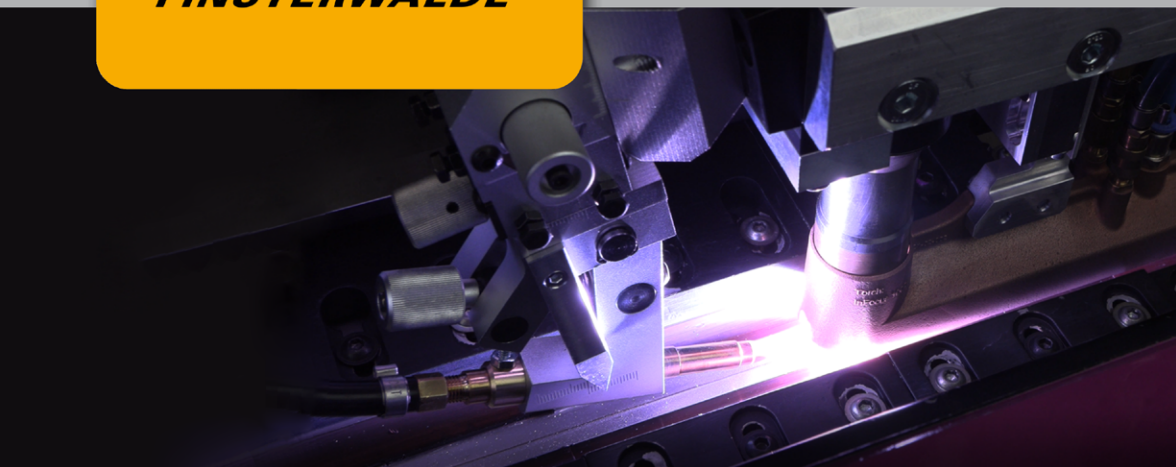


product presentation

**Kjellberg**<sup>®</sup>  
**FINSTERWALDE**

TIG-WELDING

INFOCUS



## InFocus TIG High-Performance Welding

- ✓ Single-layer keyhole welding up to 10 mm
- ✓ High speed on thin-walled, continuous welded materials
- ✓ Precision welding with required high arc stability, e.g. flange components

### The high-performance tool for your welding production

- ✓ Absolutely stable, highly concentrated arc
- ✓ Robust torch with closed cooling circuit, only three wearing parts

### In Comparison to conventional TIG

- ✓ Improved aspect ratio (seam depth to seam width)
- ✓ Smaller heat-affected zone, less distortion
- ✓ Increased welding speed, savings potential for helium
- ✓ Quick defined electrode change – no grinding, no adjustment effort

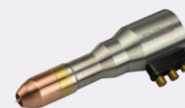
### We support you!

- ✓ Technological analysis of your welding task
- ✓ Matching design of special electrodes
- ✓ Welding tests in our laboratory environment or in your production plant
- ✓ Metallographic analyses (macro sections, REM / EDX)
- ✓ Process diagnostics, (high-speed video analyses with synchronic process data recording)

| Technical Data              | InFocus 1000  | InFocus 500 |
|-----------------------------|---|-------------|
| Welding current (100% d.c.) | 1000 A  | 500 A       |
| Shielding gases             | Ar, ArH <sub>2</sub> , ArHe                                       |             |
| Diameter                    | 30 mm   | 20 mm       |
| Weight (without lead)       | 1.4 kg  | 260 g       |
| Materials                   | high alloyed steel, duplex, nickel, nickel base, copper, titanium |             |



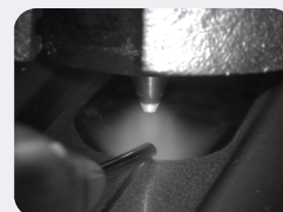
InFocus 1000 AX



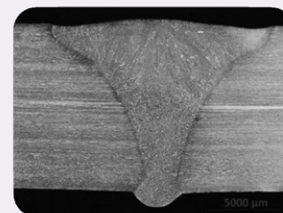
InFocus 1000 RD



InFocus 500



6 mm 1.4301



10 mm 1.4462

Kjellberg is certified acc. to  
**DIN EN ISO 9001**

[www.kjellberg.de](http://www.kjellberg.de)

Kjellberg Finsterwalde  
Schweißtechnik und Verschleiß-  
schutzsysteme GmbH  
Oscar-Kjellberg-Straße 20  
03238 Finsterwalde  
Germany

Copyright © 2022 | 15|10|22  
Kjellberg Finsterwalde

+49 3531 500-800

welding@kjellberg.de