



More information

**Kjellberg**<sup>®</sup>  
**FINSTERWALDE**

Cutting

Engineering

WELDING

**DUOWELD**

## FACTS

### Application

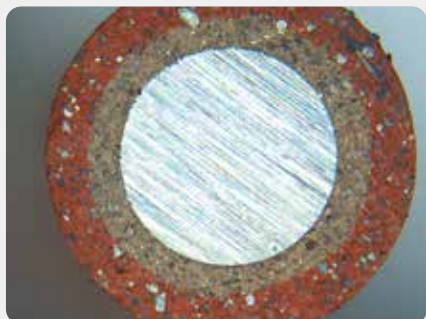
- Joint welding in constrained positions
- Unalloyed and low-alloyed steels
- Assembly and repair welding

### Advantages

- High mechanical properties
- Yield strength > 430 MPa
- Slag easily removable
- Very stable arc
- Smooth weld seams
- Suitable for alternating current

### Standards

DIN EN ISO 2560-A: E42 3 B 12 H10  
AWS A5.1: E 7016



Rutile cover outside, basic coating inside

## DUOWELD

### Qualified double-coated electrode for unalloyed and low-alloyed steels

Due to its excellent welding properties and easy handling, the double coated stick electrode DUOWELD is suitable as a universal welding filler metal in all areas of industry and trade, especially in general mechanical engineering, steel construction, boiler construction and shipbuilding.

The special structure of the electrode with two coating materials with different properties combines the advantages of a rutile coating with the high strength values of basic electrodes. A concentrated and stable arc is the basis for the outstanding for the excellent suitability for constrained layers and for X-ray safe root layers.

### Technical data

Typical analysis	C	0,08 %
	Si	0,5 %
	Mn	1,1 %
Yield strength	Re	≥ 430 MPa
Tensile strength	Rm	≥ 490 MPa
Elongation	A5	≥ 25 %
Notched-bar impact value	ISO-V	≥ 60 J /-30 °C

Kjellberg<sup>®</sup> FINSTERWALDE, ®, ©, Kjellberg and InFocus are trademarks of Kjellberg Foundation registered in the European Union and possibly other countries.

[www.kjellberg.de](http://www.kjellberg.de)

Kjellberg Finsterwalde  
Elektroden und Zusatzwerkstoffe GmbH  
Ludwig-Erhard-Straße 12  
03238 Massen | Germany  
Copyright © 2023 Kjellberg Finsterwalde  
12|07|2023

+49 3531 50768-0  
✉ [electrode@kjellberg.de](mailto:electrode@kjellberg.de)